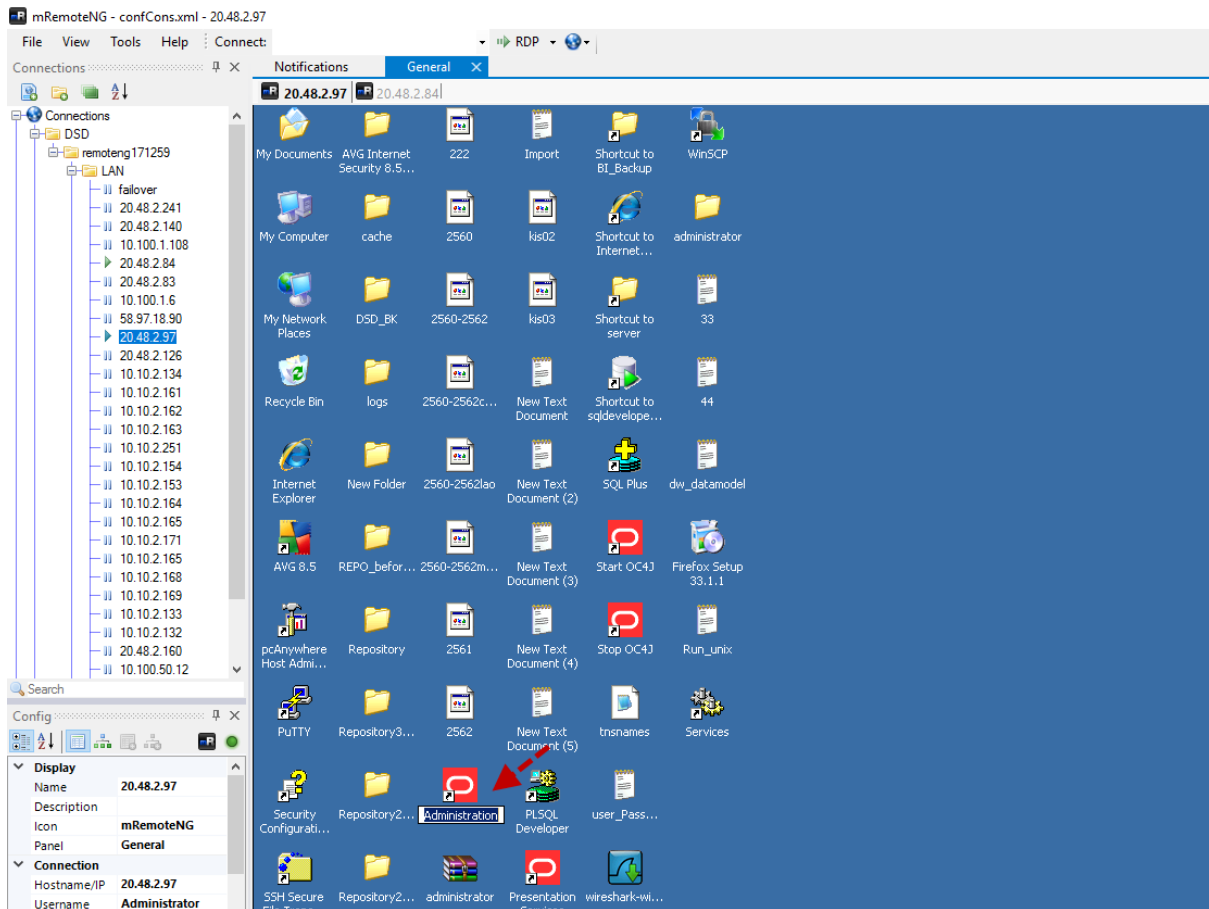
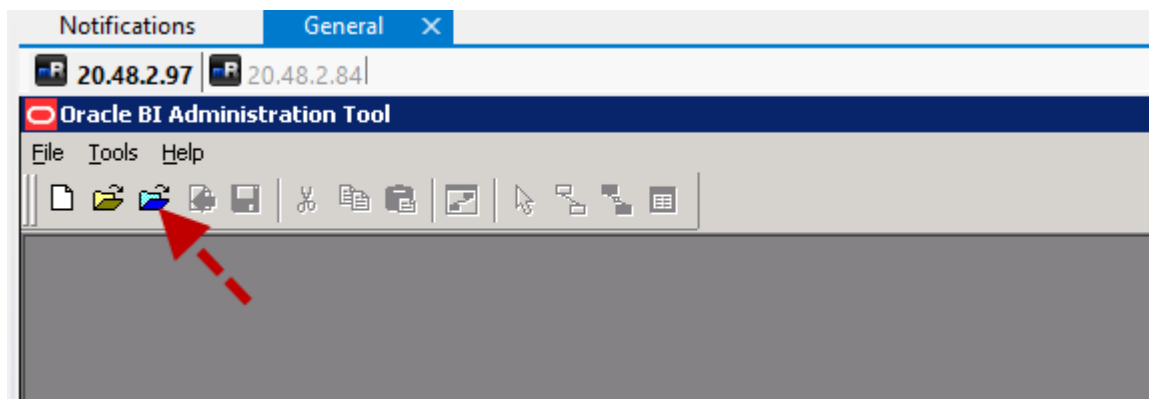


วิธีนำเข้าข้อมูลจากฐาน rep 86 เพื่อสร้าง Model ในเครื่อง 97

1. เข้าเครื่อง 20.48.2.97 จากนั้นเข้าเมนู Administration



2.



Open Online AnalyticsWeb

User: Administrator

Password:

Load all objects on startup

AnalyticsWeb

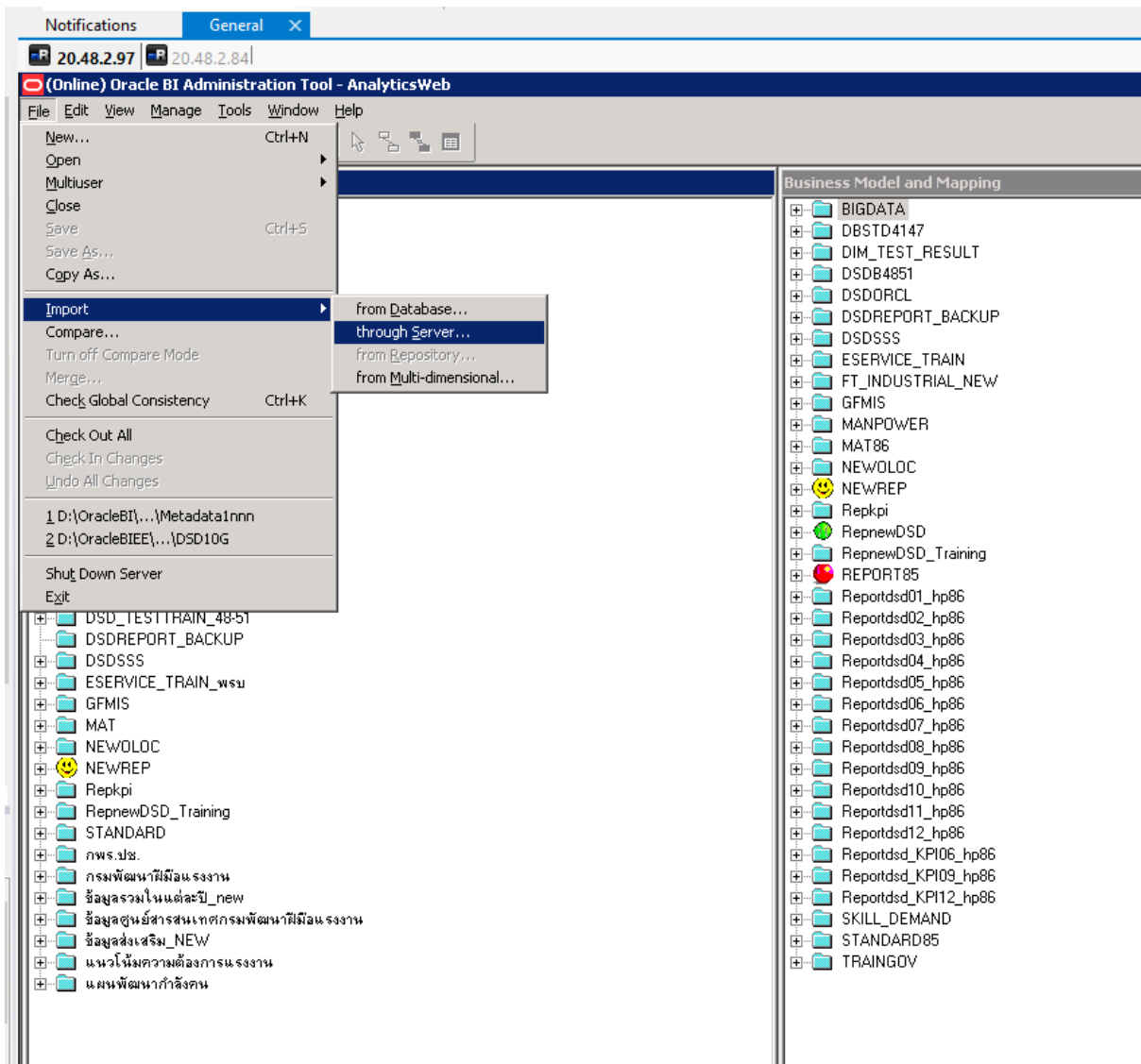
Open

Cancel

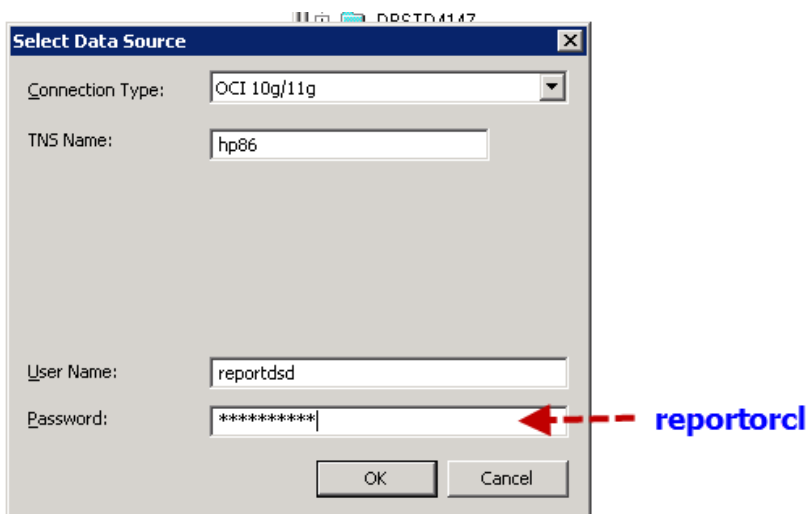
Help

← Admindsd

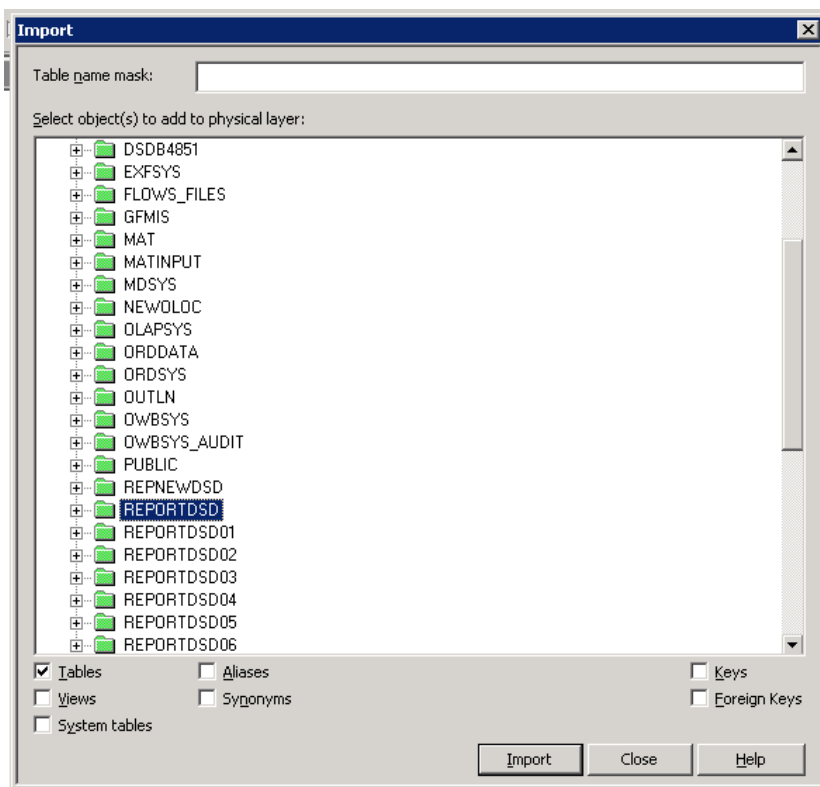
3.



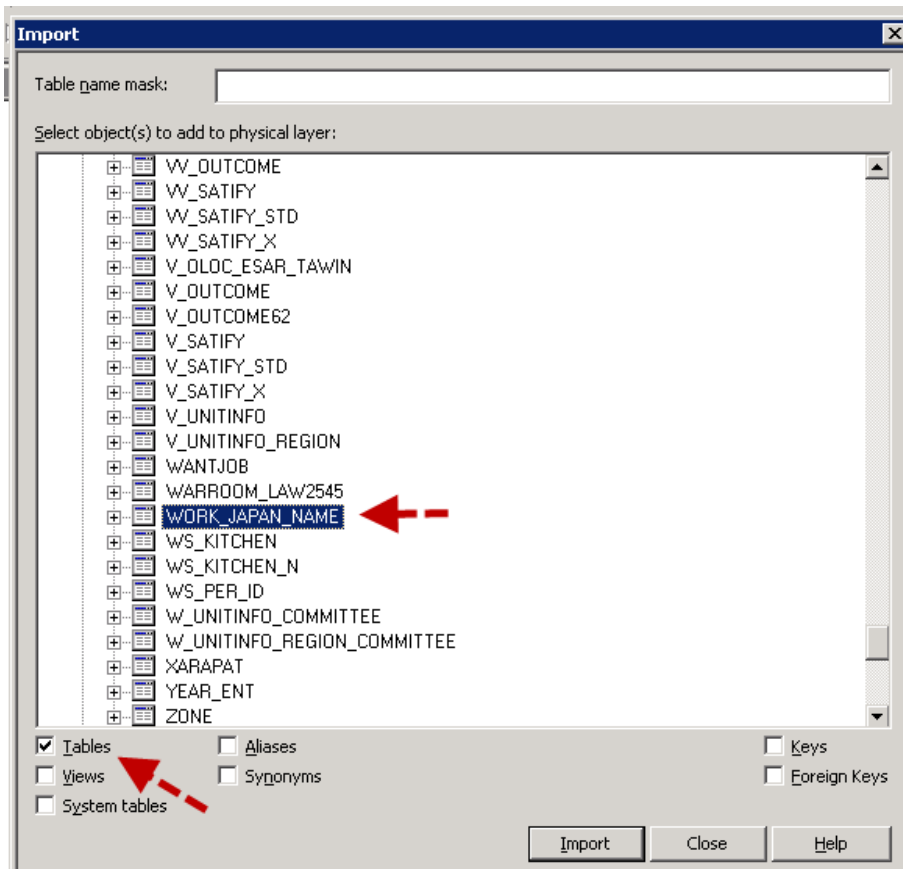
4.



5.



6.



7

The image shows a software interface with two main panels: 'Business Model and Mapping' on the left and 'Physical' on the right. Both panels display a hierarchical tree of data sources.

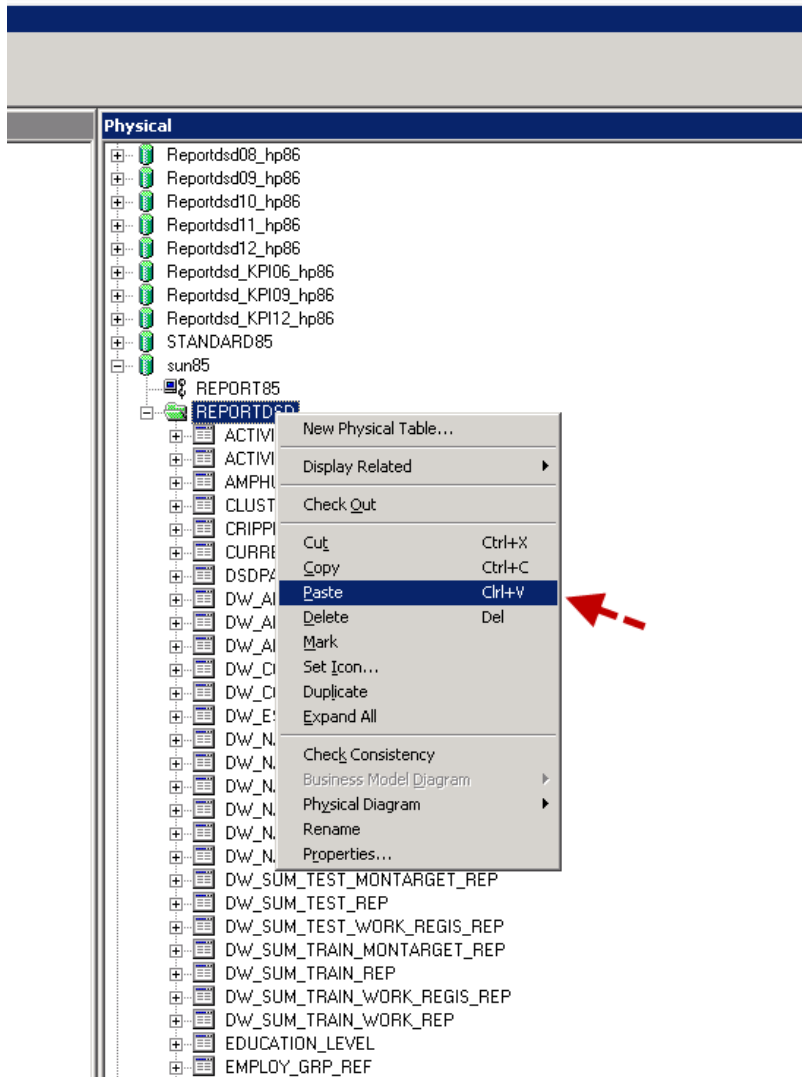
Business Model and Mapping:

- BIGDATA
- DBSTD4147
- DIM_TEST_RESULT
- DSDB4851
- DSDRCL
- DSREPORT_BACKUP
- DSRSS
- ESERVICE_TRAIN
- FT_INDUSTRIAL_NEW
- GFMS
- MANPOWER
- MAT86
- NEWOLOC
- NEWREP
- Repkpi
- RepnwDSD
- RepnwDSD_Training
- REPORT85
- Reportds01_hp86
- Reportds02_hp86
- Reportds03_hp86
- Reportds04_hp86
- Reportds05_hp86
- Reportds06_hp86
- Reportds07_hp86
- Reportds08_hp86
- Reportds09_hp86
- Reportds10_hp86
- Reportds11_hp86
- Reportds12_hp86
- Reportdsd_KPI06_hp86
- Reportdsd_KPI09_hp86
- Reportdsd_KPI12_hp86
- SKILL_DEMAND
- STANDARD85
- TRAINGOV

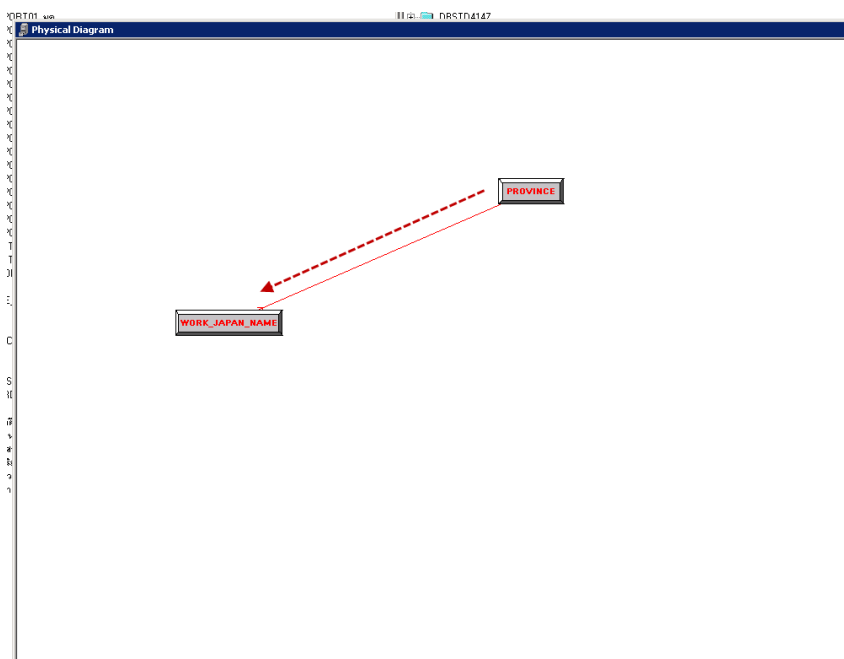
Physical:

- B83
- CONDSD_STG
- DBSTD4147
- DSDB4851
- DSREPORT_BACKUP
- ESERVICE_TRAIN
- GFMS
- hp86 (indicated by a red dashed arrow)
- Connection Pool
- REPORTDSD
 - Dw_ES_ALL_EMPLOYEE_ST2
 - REP_DETAIL_PFB
 - REP_DETAIL_ST2
 - REP_M26
 - WORK_JAPAN_NAME (indicated by a red dashed arrow)
- hp861
- hp86_oloc
- MAT
- New_rep
- RepnwDSD
- RepnwDSD_Training
- Reportds01_hp86
- Reportds02_hp86
- Reportds03_hp86
- Reportds04_hp86
- Reportds05_hp86
- Reportds06_hp86
- Reportds07_hp86
- Reportds08_hp86
- Reportds09_hp86
- Reportds10_hp86
- Reportds11_hp86
- Reportds12_hp86
- Reportdsd_KPI06_hp86
- Reportdsd_KPI09_hp86
- Reportdsd_KPI12_hp86
- STANDARD85
- sun85
- sun85#1
- sun85#2หลายสามารถลบทิ้งได้
- sun85#2เอาไว้ใช้การสั่งทำ hp86 เผลอจากเครื่อง 86 พัง เมื่อ 9 ธค 62 หากซ่อมเสร็จเปลี่ยนกลับเป็น hp86
- sun93
- TestDSD
- Train_Budget
- XE
- XE#1

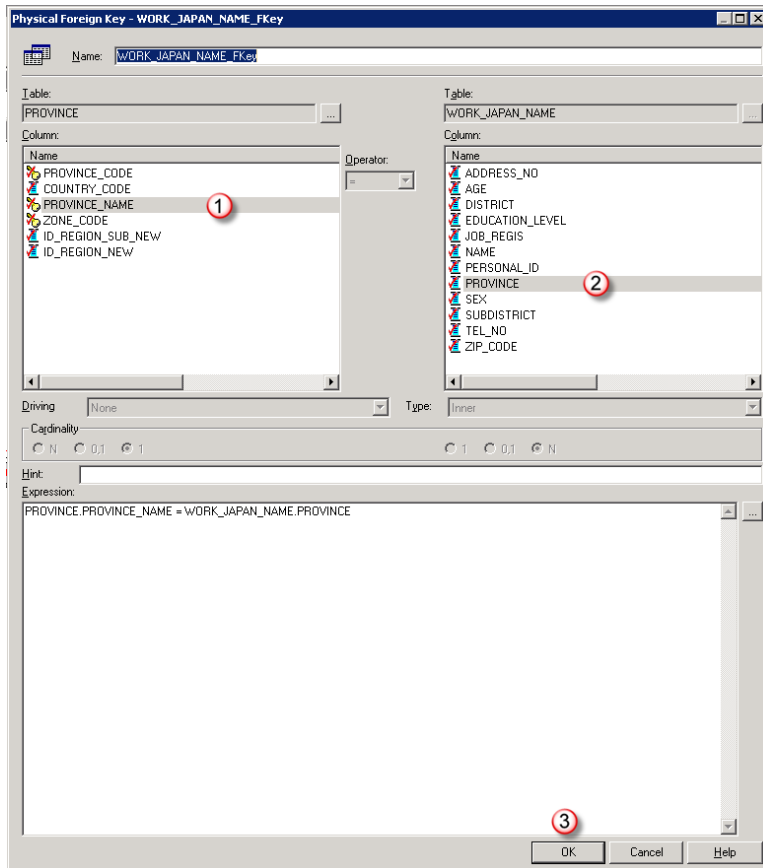
8



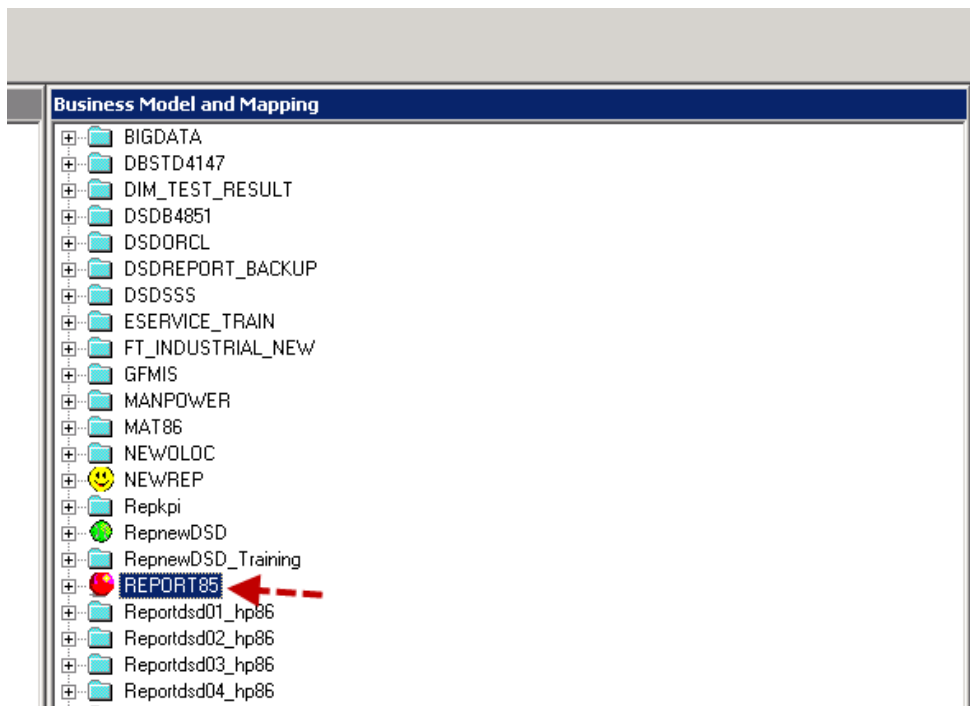
9.1 จังหวัดมีหลาย record



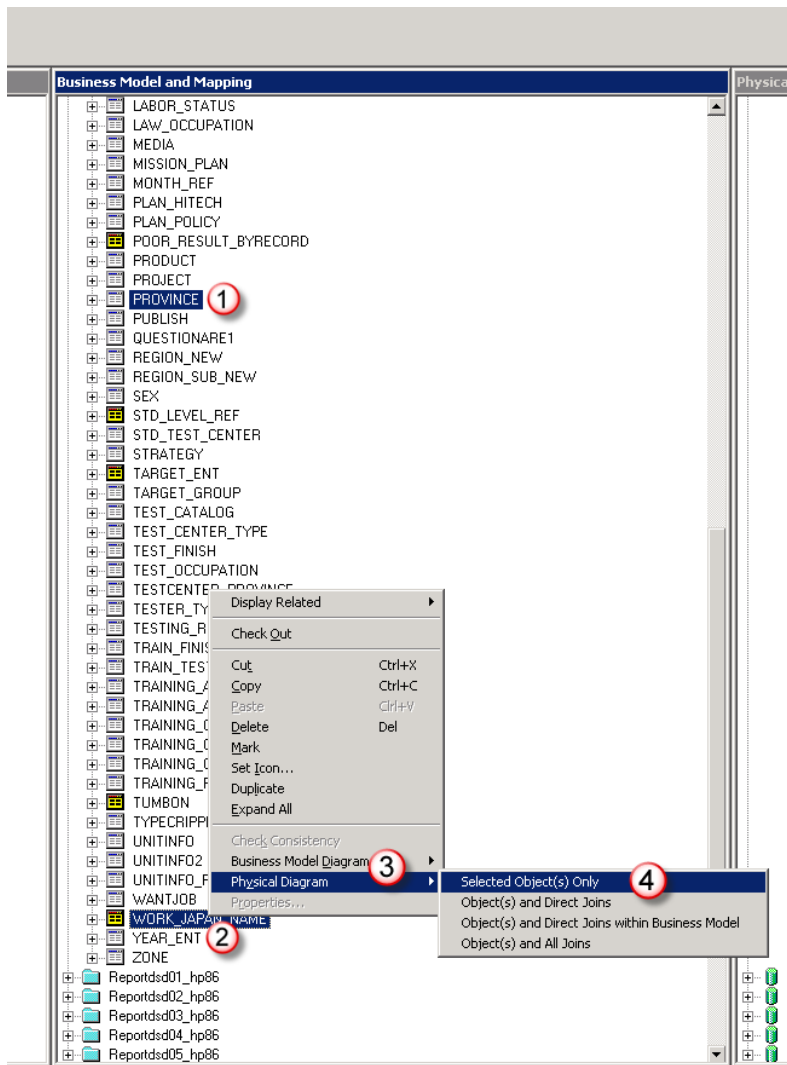
10.



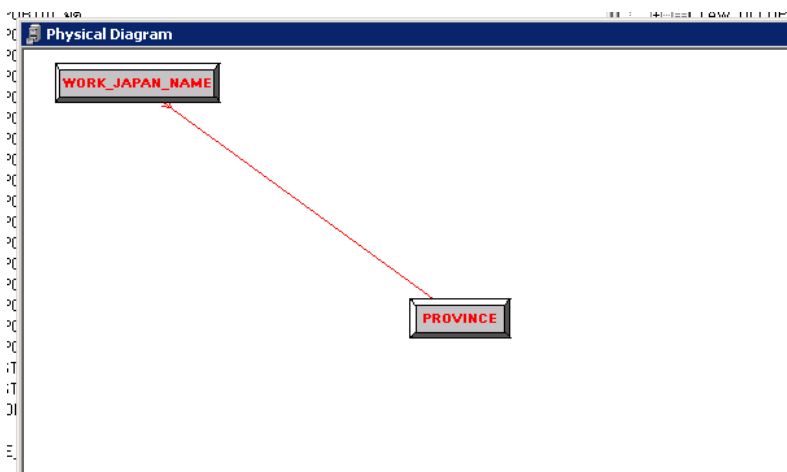
11.



12. ดูว่าเชื่อมกันหรือยัง



13.



Business Model and Mapping

- LABOR_STATUS
- LAW_OCCUPATION
- MEDIA
- MISSION_PLAN
- MONTH_REF
- PLAN_HITECH
- PLAN_POLICY
- POOR_RESULT_BYRECORD
- PRODUCT
- PROJECT
- PROVINCE **1**
- PUBLIC
- QUEST
- REGION
- REGION
- SEX
- STD_LI
- STD_T
- STRAT
- TARGE
- TARGE
- TEST_I
- TEST_I
- TEST_I
- TEST_I
- TEST_I
- TEST_I
- TEST_I
- TEST_I
- TESTING_PERSON
- TRAIN_FINISH
- TRAIN_TEST_ATTEND
- TRAINING_ACTIVITY
- TRAINING_ACTIVITY_SUB
- TRAINING_OCCUPATION
- TRAINING_OCCUPATION_GROUP
- TRAINING_OCCUPATION_JOB
- TRAINING_REASON
- TUMBON
- TYPECRIPPLED
- UNITINFO
- UNITINFO2
- UNITINFO_REGION
- WANTJOB
- WORK_JAPAN_NAME **2**
- YEAR_ENT
- ZONE
- Reportdsd01_hp86
- Reportdsd02_hp86
- Reportdsd03_hp86

Context menu for PROVINCE:

- Display Related
- Check Out
- Cut (Ctrl+X)
- Copy (Ctrl+C)
- Paste (Ctrl+V)
- Delete (Del)
- Mark
- Set Icon...
- Duplicate
- Expand All
- Check Consistency
- Business Model Diagram **3**
 - Whole Diagram
 - Selected Tables Only
 - Selected Tables and Direct Joins **4**
 - Selected Fact Tables and Dimensions
- Physical Diagram
- Properties...